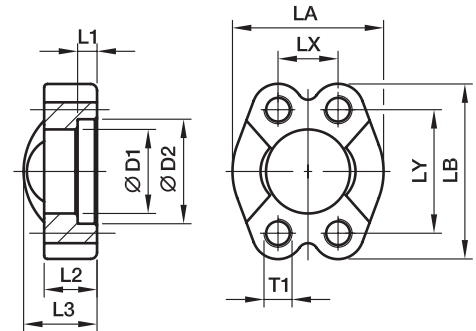


FUSM SAE Full flanges with metric tapped holes

ISO 6162-1/-2



3000 PSI Series

| Nom. flange size | | D1 | D2 | L1 | L2 | L3 | LA | LB | LX | LY | T1 | Weight (steel) kg/piece | Order code* | PN (bar ¹⁾) | |
|------------------|----------|-------|-------|------|----|----|-----|-------|------|-------|------------|-------------------------|-------------------|-------------------------|-----|
| SAE (in.) | ISO (DN) | | | | | | | | | | | | | CF | SS |
| 1/2 | 13 | 24.3 | 31.0 | 6.2 | 13 | 20 | 46 | 54.0 | 17.5 | 38.1 | M 8 | 0.13 | FUSM32 | 345 | 345 |
| 3/4 | 19 | 32.1 | 38.9 | 6.2 | 14 | 22 | 52 | 65.0 | 22.3 | 47.6 | M10 | 0.19 | FUSM33 | 345 | 345 |
| 1 | 25 | 38.5 | 45.2 | 7.5 | 16 | 24 | 59 | 69.9 | 26.2 | 52.4 | M10 | 0.23 | FUSM34 | 345 | 345 |
| 1 1/4 | 32 | 43.7 | 51.6 | 7.5 | 16 | 22 | 73 | 79.4 | 30.2 | 58.7 | M10 | 0.31 | FUSM35/10 | 276 | 276 |
| 1 1/4 | 32 | 43.7 | 51.6 | 7.5 | 16 | 22 | 73 | 79.4 | 30.2 | 58.7 | M12 | 0.30 | FUSM35/12 | 276 | 276 |
| 1 1/2 | 38 | 50.8 | 61.1 | 7.5 | 16 | 25 | 83 | 93.8 | 35.7 | 69.9 | M12 | 0.44 | FUSM36 | 207 | 207 |
| 1 1/2 | 38 | 50.8 | 61.1 | 7.5 | 16 | 25 | 83 | 93.8 | 35.7 | 69.9 | M14 | 0.47 | FUSM36/14 | 207 | 207 |
| 2 | 51 | 62.8 | 72.3 | 9.0 | 16 | 26 | 97 | 101.6 | 42.9 | 77.8 | M12 | 0.56 | FUSM38/12 | 207 | 207 |
| 2 | 51 | 62.8 | 72.3 | 9.0 | 16 | 26 | 97 | 101.6 | 42.9 | 77.8 | M14 | 0.54 | FUSM38 | 207 | 207 |
| 2 1/2 | 64 | 74.9 | 84.9 | 9.0 | 19 | 38 | 109 | 114.3 | 50.8 | 88.9 | M12 | 0.85 | FUSM310 | 172 | 172 |
| 2 1/2 | 64 | 74.9 | 84.9 | 9.0 | 19 | 38 | 109 | 114.3 | 50.8 | 88.9 | M14 | 0.73 | FUSM310/14 | 172 | 172 |
| 3 | 76 | 90.9 | 102.4 | 9.0 | 22 | 41 | 131 | 135.0 | 61.9 | 106.4 | M16 | 1.25 | FUSM312 | 138 | 138 |
| 3 1/2 | 89 | 102.4 | 115.0 | 10.7 | 23 | 28 | 140 | 152.4 | 69.9 | 120.7 | M16 | 1.66 | FUSM314 | 34 | 34 |
| 4 | 102 | 115.1 | 127.8 | 10.7 | 25 | 35 | 150 | 162.0 | 77.8 | 130.2 | M16 | 1.83 | FUSM316 | 34 | 34 |
| 5 | 127 | 140.5 | 153.2 | 10.7 | 28 | 41 | 180 | 184.2 | 92.1 | 152.4 | M16 | 2.50 | FUSM320 | 34 | 34 |

6000 PSI Series

| | | | | | | | | | | | | | | | |
|-------|----|-------|-------|------|----|----|-----|-------|------|-------|------------|------|------------------|-----|-----|
| 1/2 | 13 | 24.6 | 32.5 | 7.2 | 16 | 22 | 48 | 56.4 | 18.2 | 40.5 | M 8 | 0.18 | FUSM62 | 420 | 420 |
| 3/4 | 19 | 32.5 | 42.0 | 8.2 | 19 | 28 | 60 | 71.4 | 23.8 | 50.8 | M10 | 0.34 | FUSM63 | 420 | 420 |
| 1 | 25 | 38.9 | 48.4 | 9.0 | 24 | 33 | 70 | 81.0 | 27.8 | 57.2 | M12 | 0.55 | FUSM64 | 420 | 420 |
| 1 1/4 | 32 | 44.5 | 54.8 | 9.8 | 27 | 38 | 78 | 95.3 | 31.8 | 66.6 | M14 | 0.87 | FUSM65 | 420 | 420 |
| 1 1/4 | 32 | 44.5 | 54.8 | 9.8 | 27 | 38 | 78 | 95.3 | 31.8 | 66.6 | M12 | 0.87 | FUSM65/12 | 420 | 420 |
| 1 1/2 | 38 | 51.6 | 64.3 | 12.1 | 30 | 43 | 96 | 112.8 | 36.5 | 79.3 | M16 | 1.33 | FUSM66 | 420 | 420 |
| 2 | 51 | 67.6 | 80.2 | 12.1 | 37 | 52 | 114 | 133.4 | 44.5 | 96.8 | M20 | 2.31 | FUSM68 | 420 | 420 |
| 2 1/2 | 64 | 90.0 | 108.9 | 20.5 | 45 | 45 | 150 | 180.0 | 58.7 | 123.8 | M24 | 4.02 | FUSM610 | 420 | 420 |
| 3 | 76 | 115.0 | 132.5 | 25.5 | 55 | 55 | 178 | 215.0 | 71.4 | 152.4 | M30 | 7.05 | FUSM612 | 420 | 420 |

¹⁾Pressure shown = Item deliverable

$$\frac{PN \text{ (bar)}}{10} = PN \text{ (MPa)}$$

*Please add the **suffixes** below according to the material/surface required.

| Order code suffixes | | | |
|---------------------------------|-----------------------------|--|-------------------|
| Material | Suffix surface and material | Example only flange clamp with metr. threads | Description |
| Steel, zinc plated, Cr(VI)-free | CF | FUSM32CFM | only flange clamp |
| Stainless steel | SS | FUSM32SSM | only flange clamp |